

### Product Feature

1. Single output: power 20W
2. Input voltage:85~264VAC 120~370VDC
3. Protections:Short circuit/Overload /Over voltage
4. Cooling by free air convection
5. LED indicator for power on
6. Built in DC OK active signal
7. Can be installed on DIN rail TS-35/7.5 or 15



3 years Warranty

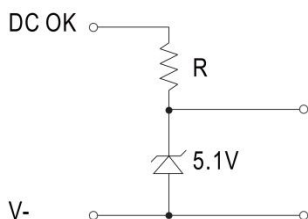
190g/Typ.

### Electrical Specifications

Model	DP-M20-05	DP-M20-12	DP-M20-15	DP-M20-24
DC output voltage,current	5V 0~3A	12V 0~1.67A	15V 0~1.34A	24V 0~1A
Ripple and Noise(20MHz)	80mVp-p	120mVp-p	120mVp-p	150mVp-p
Linear adjustment rate	±1%	±1%	±1%	±1%
Load adjustment rate	±1%	±1%	±1%	±1%
Efficiency	76%	80%	81%	84%
Voltage adjustment range Input	±10%	±10%	±10%	±10%
voltage range	85~264VAC/120~370VDC47~63Hz			
Impact current	Cold start current 20A/115VAC 40A/230VAC			
Overload protection	105%~160% cut off the output,automatic recovery			
Overvoltage protection	120%~140% shut down O/P voltage,re-power on to recover			
Setup,rise,hold up time	500ms,30ms/230VAC at full load 1000ms,30ms/115VAC at full load			
Withstand voltage	I/P-O/P:1.5kV I/P-FG:1.5kV O/P-FG:0.5kV 1minute			
Isolation resistance	I/P-O/P I/P-FG O/P-FG:500VDC/100MΩ			
Operation temperature	-10°C~+50°C			
Dimension	22.5x90x100mm			
Weight	0.19kg			
Packing	45.5x31.5x23CM/90PCS/18kg			

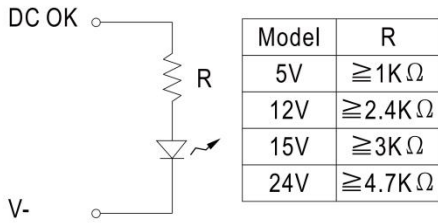
### Application of DC OK Active Signal

#### (a) 5V signal

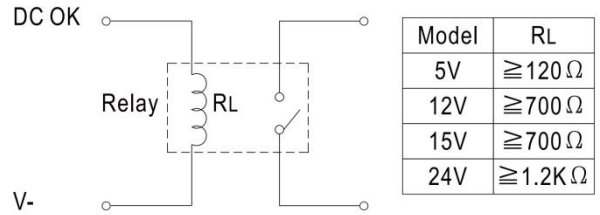


Model	R
5V	≧ 200 Ω
12V	≧ 1.5K Ω
15V	≧ 2K Ω
24V	≧ 3.9K Ω

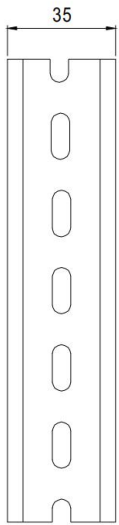
### (b) LED



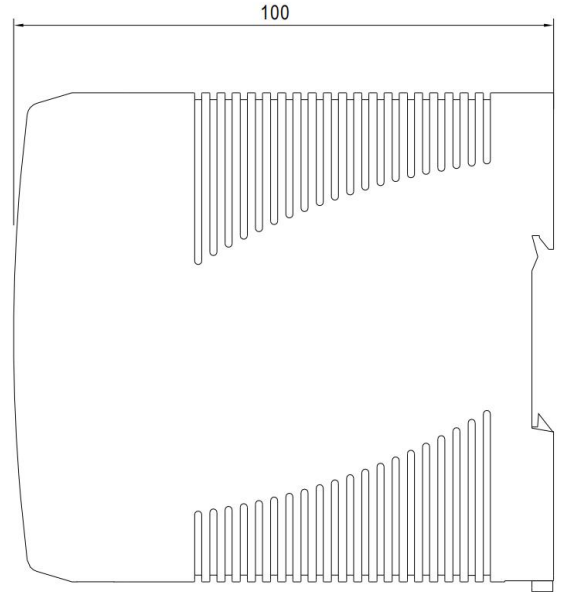
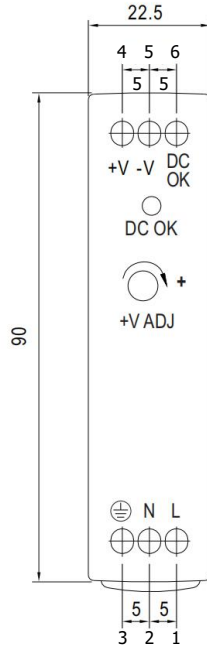
### (c) Relay



## Mechanical Specification



Install DIN rail TS35/7.5 or TS35/15

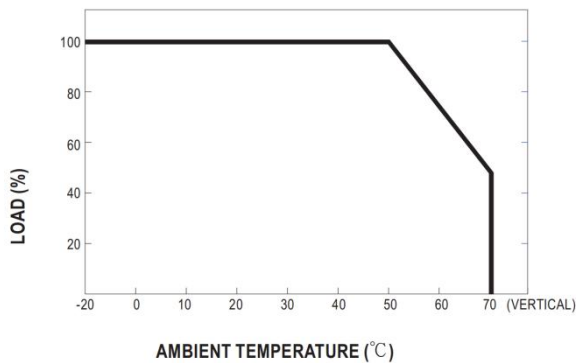


Unit:mm

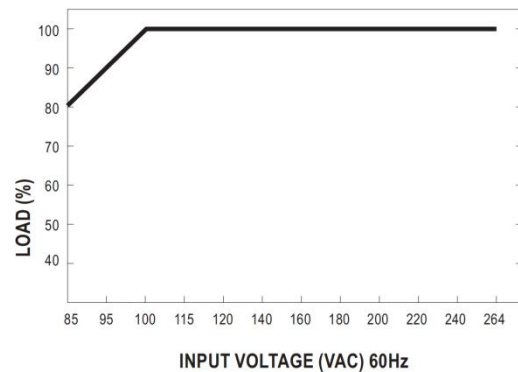
### Terminal Pin No. Assignment

Pin	Function
1,2	AC input
3	GND
4	DC output +V
5	DC output -V
6	DC OK

## Derating Curve



## Output Derating VS Input Voltage



**GUANGZHOU AMCHARD-POWER TECHNOLOGY CO., LTD.**