

Product Feature

1. Single output: power 20W
2. Input voltage: 85~264VAC 120~370VDC
3. Protections: Short circuit/Overload /Over voltage
4. Cooling by free air convection
5. LED indicator for power on
6. Built in DC OK active signal
7. Can be installed on DIN rail TS-35/7.5 or 15



3 years
Warranty

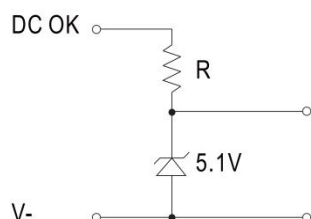
190g/Typ.

Electrical Specifications

Model	DP-M20-05	DP-M20-12	DP-M20-15	DP-M20-24
DC output voltage,current	5V 0~3A	12V 0~1.67A	15V 0~1.34A	24V 0~0.1A
Ripple and Noise(20MHz)	80mVp-p	120mVp-p	120mVp-p	150mVp-p
Linear adjustment rate	±1%	±1%	±1%	±1%
Load adjustment rate	±1%	±1%	±1%	±1%
Efficiency	76%	80%	81%	84%
Voltage adjustment range Input	±10%	±10%	±10%	±10%
voltage range	85~264VAC/120~370VDC 47~63Hz			
Impact current	Cold start current 20A/115VAC 40A/230VAC			
Overload protection	105%~160% cut off the output,automatic recovery			
Overvoltage protection	120%~140% shut down O/P voltage,re-power on to recover			
Setup,rise,hold up time	500ms,30ms/230VAC at full load 1000ms,30ms/115VAC at full load			
Withstand voltage	I/P-O/P:1.5kV I/P-FG:1.5kV O/P-FG:0.5kV 1minute			
Isolation resistance	I/P-O/P I/P-FG O/P-FG:500VDC/100MΩ			
Operation temperature	-10°C~+50°C			
Dimension	22.5x90x100mm			
Weight	0.19kg			
Packing	45.5x31.5x23CM/90PCS/18kg			

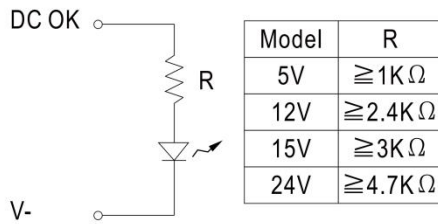
Application of DC OK Active Signal

(a) 5V signal

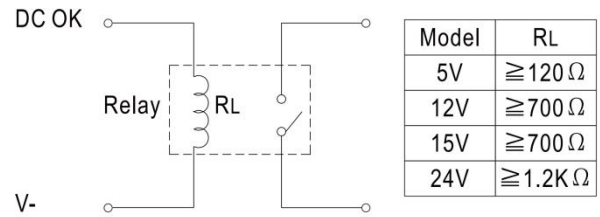


Model	R
5V	$\geq 200 \Omega$
12V	$\geq 1.5K \Omega$
15V	$\geq 2K \Omega$
24V	$\geq 3.9K \Omega$

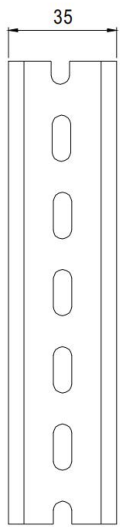
(b) LED



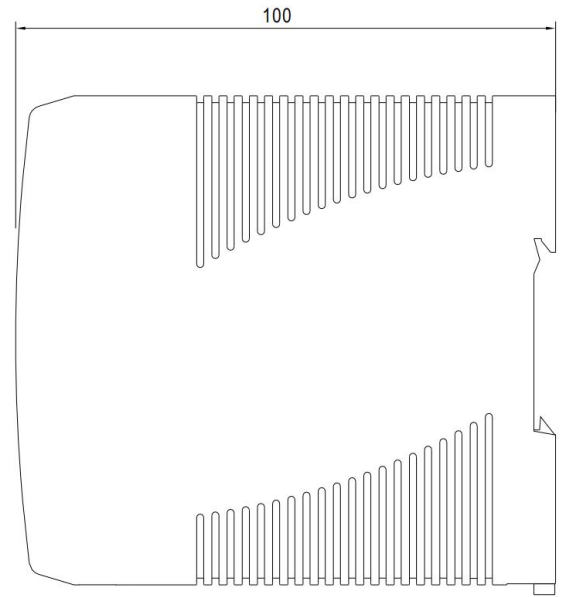
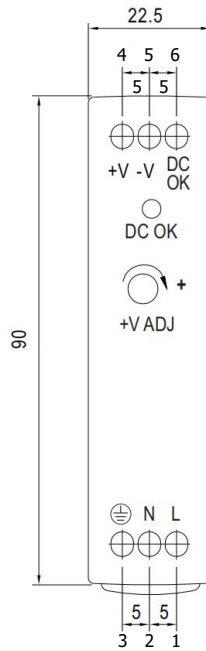
(c) Relay



Mechanical Specification



Install DIN rail TS35/7.5 or TS35/15

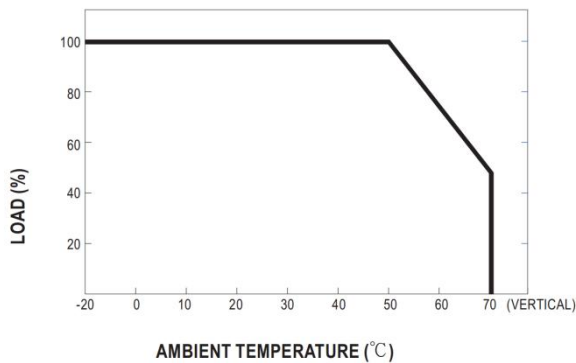


Unit:mm

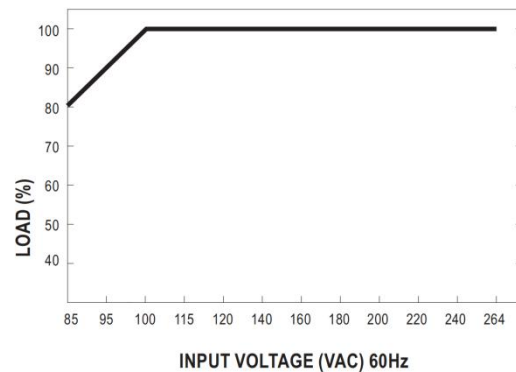
Terminal Pin No. Assignment

Pin	Function
1,2	AC input
3	GND
4	DC output +V
5	DC output -V
6	DC OK

Derating Curve



Output Derating VS Input Voltage



DONGGUAN AMCHARD-POWER TECHNOLOGY CO., LTD.