

### Features:

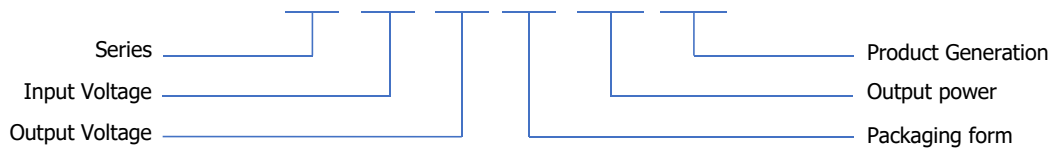
1. Wide operating temperature range: -40°C to +105°C
2. Up to 85% efficiency
3. No load current as low as 5mA
4. Ripple as low as 50mVp-p
5. Sustainable short-circuit protection
6. Isolation:1500VDC
7. Fixed voltage input, Output 2W, Isolated, Non stabilized voltage, Dual output, SIP package.



3 years  
Warranty

### Model Numbering

## AMAxS-2WR3



### Selection Guide

产品型号 Product model	输入电压 Input Voltage Standard value(range)	输出电压 Output Voltage	输出电流 Output Current (mA) (Max./Min.)	效率 Efficiency % (Min./Typ.)	最大容性负载 Maximum capacitive load ( $\mu$ F)
AMA0303S-2WR3	3.3VDC (2.97-3.63)	$\pm 3.3$	$\pm 303/\pm 30$	70/75	1200
AMA0305S-2WR3		$\pm 5$	$\pm 200/\pm 20$	78/84	1200
AMA0309S-2WR3		$\pm 9$	$\pm 111/\pm 11$	78/84	470
AMA0312S-2WR3		$\pm 12$	$\pm 83/\pm 8$	78/84	220
AMA0315S-2WR3		$\pm 15$	$\pm 67/\pm 7$	78/84	220
AMA0324S-2WR3		$\pm 24$	$\pm 42/\pm 4$	80/85	100

产品型号 Product model	输入电压 Input Voltage Standard value(range)	输出电压 Output Voltage	输出电流 Output Current (mA) (Max./Min.)	效率 Efficiency % (Min./Typ.)	最大容性负载 Maximum capacitive load ( $\mu$ F)
AMA0503S-2WR3	5VDC (4.5-5.5)	$\pm 3.3$	$\pm 303/\pm 30$	70/75	1200
AMA0505S-2WR3		$\pm 5$	$\pm 200/\pm 20$	78/84	1200
AMA0509S-2WR3		$\pm 9$	$\pm 111/\pm 11$	78/84	470
AMA0512S-2WR3		$\pm 12$	$\pm 83/\pm 8$	78/84	220
AMA0515S-2WR3		$\pm 15$	$\pm 67/\pm 7$	78/84	220
AMA0524S-2WR3		$\pm 24$	$\pm 42/\pm 4$	80/85	100
AMA0903S-2WR3	9VDC (8.1-9.9)	$\pm 3.3$	$\pm 303/\pm 30$	70/75	1200
AMA0905S-2WR3		$\pm 5$	$\pm 200/\pm 20$	78/84	1200
AMA0909S-2WR3		$\pm 9$	$\pm 111/\pm 11$	78/84	470
AMA0912S-2WR3		$\pm 12$	$\pm 83/\pm 8$	78/84	220
AMA0915S-2WR3		$\pm 15$	$\pm 67/\pm 7$	78/84	220
AMA0924S-2WR3		$\pm 24$	$\pm 42/\pm 4$	80/85	100
AMA1203S-2WR3	12VDC (10.8-13.2)	$\pm 3.3$	$\pm 303/\pm 30$	70/75	1200
AMA1205S-2WR3		$\pm 5$	$\pm 200/\pm 20$	78/84	1200
AMA1209S-2WR3		$\pm 9$	$\pm 111/\pm 11$	78/84	470
AMA1212S-2WR3		$\pm 12$	$\pm 83/\pm 8$	78/84	220
AMA1215S-2WR3		$\pm 15$	$\pm 67/\pm 7$	78/84	220
AMA1224S-2WR3		$\pm 24$	$\pm 42/\pm 4$	80/85	100
AMA1503S-2WR3	15VDC (13.5-16.5)	$\pm 3.3$	$\pm 303/\pm 30$	70/75	1200
AMA1505S-2WR3		$\pm 5$	$\pm 200/\pm 20$	78/84	1200
AMA1509S-2WR3		$\pm 9$	$\pm 111/\pm 11$	78/84	470
AMA1512S-2WR3		$\pm 12$	$\pm 83/\pm 8$	78/84	220
AMA1515S-2WR3		$\pm 15$	$\pm 67/\pm 7$	78/84	220
AMA1524S-2WR3		$\pm 24$	$\pm 42/\pm 4$	80/85	100
AMA2403S-2WR3	24VDC (21.6-26.4)	$\pm 3.3$	$\pm 303/\pm 30$	70/75	1200
AMA2405S-2WR3		$\pm 5$	$\pm 200/\pm 20$	78/84	1200
AMA2409S-2WR3		$\pm 9$	$\pm 111/\pm 11$	78/84	470
AMA2412S-2WR3		$\pm 12$	$\pm 83/\pm 8$	78/84	220
AMA2415S-2WR3		$\pm 15$	$\pm 67/\pm 7$	78/84	220
AMA2424S-2WR3		$\pm 24$	$\pm 42/\pm 4$	80/85	100

### Input Characteristics

Parameter/参数	Conditions/测试条件		Min.	Typ.	Max.	Units
Input current (Rated Load) 输入电流 (额定负载)	Nominal voltage input@3.3VDC 标称电压输入@3.3VDC	3.3VDC Output	--	760	800	mA
		5VDC/7.2VDC Output	--	750	791	mA
		9VDC/12VDC Output	--	726	790	mA
		15VDC/24VDC Output	--	700	770	mA
	Nominal voltage input@5VDC 标称电压输入@5VDC	3.3VDC Output	--	534	564	mA
		5VDC/7.2VDC Output	--	477	500	mA
		9VDC/12VDC Output	--	471	494	mA
		15VDC/24VDC Output	--	466	490	mA
	Nominal voltage input@12VDC 标称电压输入@12VDC	3.3VDC Output	--	223	235	mA
		5VDC/7.2VDC Output	--	208	219	mA
		9VDC/12VDC Output	--	203	215	mA
		15VDC/24VDC Output	--	200	211	mA
	Nominal voltage input@15VDC 标称电压输入@15VDC	3.3VDC Output	--	167	176	mA
		5VDC/7.2VDC Output	--	163	171	mA
		9VDC/12VDC Output	--	162	170	mA
		15VDC/24VDC Output	--	161	170	mA
	Nominal voltage input@24VDC 标称电压输入@24VDC	3.3VDC Output	--	110	120	mA
		5VDC/7.2VDC Output	--	104	112	mA
		9VDC/12VDC Output	--	103	112	mA
		15VDC/24VDC Output	--	100	110	mA
Input current (No-load) 输入电流 (空载)			--	5	20	mA
Reflected ripple current 反射纹波电流			3	15	20	mA
Input impulse voltage 输入冲击电压	1sec. max. 最大1秒	3.3VDC/5VDC Input	-0.7	--	9	VDC
		9VDC Input	-0.7	--	12	VDC
		12VDC Input	-0.7	--	18	VDC
		15VDC Input	-0.7	--	21	VDC
		24VDC Input	-0.7	--	30	VDC
Input filter 输入滤波类型	Capacitive filtering 电容滤波					
Remarks/备注: <b>This product does not support hot plug / 此产品不支持热插拔</b>						

### Output Characteristic

Parameter/参数	Conditions/测试条件	Min.	Typ.	Max.	Units	
Output voltage accuracy 输出电压精度		See Figure 3 (envelope curve) 见图3 (包络曲线图)				
Linear regulation rate 线性调节率	Input voltage variation +/- 1% 输入电压变化 +/- 1%	3.3VDC Output	--	--	+/-1.5	%
		Other outputs	--	--	+/-1.2	%
Load regulation rate 负载调节率	10% to 100% load 10%-100% 负载	3.3VDC Output	--	15	20	%
		5VDC Output	--	10	15	%
		9VDC Output	--	8	10	%
		12VDC Output	--	7	10	%
		15VDC Output	--	6	10	%
		24VDC Output	--	5	10	%
Ripple & Noise 波纹和噪声	20MHz bandwidth 20MHz带宽	--	50	200	mVp-p	
Temperature drift coefficient 温度漂移系数	100% load 满载	--	+/-0.03	--	%/°C	
Short circuit protection 短路保护	Sustainable, Self-healing 可持续、自恢复					

Note: The testing method for ripple and noise is the parallel line testing method.  
注：纹波和噪声的测试方法采用平行线测试法。

### General Characteristics

Parameter/参数	Conditions/测试条件	Min.	Typ.	Max.	Units
Isolation voltage 隔离电压	Input-output, Test time 1 minute, Leakage current less than 1 mA 输入-输出, 测试时间1分钟, 漏电流小于1 mA	1500	--	--	VDC
Insulation resistance 绝缘电阻	Input-output, Insulation voltage 500VDC 输入-输出, 绝缘电压500VDC	1000	--	--	MΩ
Isolation capacitance 隔离电容	Input-output, 100KHz/0.1V 输入-输出, 100KHz/0.1V	--	20	50	pF
Working temperature 工作温度	Temperature ≥ 85 °C for derating (See Figure 4) 温度 ≥ 85°C 时, 降额使用 (见图4)	-40	--	+105	°C
Storage temperature 储存温度		-55	--	+125	°C
Storage humidity 储存湿度	Non condensing 无凝结	--	--	95	%RH

Parameter/参数	Conditions/测试条件	Min.	Typ.	Max.	Units
Housing temperature rise during operation 工作时外壳温升	Ta=25 °C, Nominal input, Full output Ta=25°C, 标称电压输入, 满载	--	15	25	°C
Soldering temperature resistance of pins 引脚耐焊接温度	The distance from the welding spot to the shell is 1.5mm, 10 seconds 焊点到壳体的距离为1.5mm, 10秒	--	--	300	°C
	REFLOW: Peak temperature Tc ≤ 245 °C, maximum time above 217 °C for 60 seconds. 回流焊: 峰值温度 Tc≤245°C, 217°C以上时间最大为60s.	--	--	245	°C
Switching frequency 开关频率	Full load, Nominal input voltage 满载, 标称输入电压	--	270	--	kHz
Mean time between failures 【MTBF】 平均无故障时间	MIL-HDBK-217F@25°C	3500	--	--	kHours

## Physical Characteristics

Parameter/参数	Content/内容
Housing material 外壳材料	Black flame retardant and heat-resistant plastic (UL94V-0) 黑色阻燃耐热塑料 (UL94V-0)
Overall dimensions 外形尺寸	19.65 x 7.05 x 10.16mm
Weight 重量	2.1g(Typ.)
Cooling mode 冷却方式	Natural air cooling 自然空冷

## EMC Characteristics

Parameter 参数	Category 类别	Content 内容
EMI	Conductive disturbance 传导骚扰	CISPR32/EN55032 CLASS B (The recommended circuit is shown in Figure 2) (推荐电路如图2所示)
	Radiation disturbance 辐射骚扰	CISPR32/EN55032 CLASS B (The recommended circuit is shown in Figure 2) (推荐电路如图2所示)
EMS	Electrostatic discharge 静电放电	IEC/EN61000-4-2 Contact ±4KV perf. Criteria B

## Circuit Design and Application



Figure 1: Application circuit

图1: 应用电路

Table 1:  
Recommended Capacitive Load Values  
推荐电容负载值

Vin(VDC)	Cin(μF)	Vo(VDC)	Cout(μF)
Nominal voltage 标称电压	1-10	Nominal voltage 标称电压	2.2-22

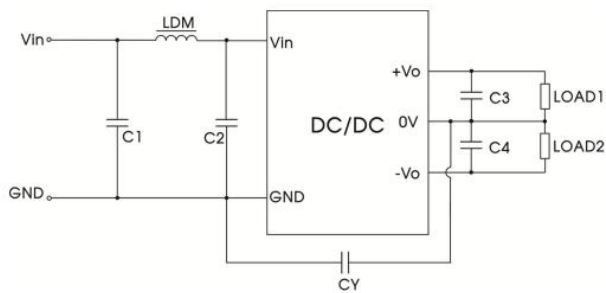


Figure 2: EMC Typical Recommended Circuits

图2:EMC典型推荐电路

Table 2:  
Recommended Circuit Parameter Values  
推荐电路参数

Category 类别	Component 元件	Value 参数
EMI	C1	4.7μF /50V
	C2	4.7μF /50V
	C3,C4	2.2-22μF /50V
	CY	270pF/2kV
	LDM	6.8μH

1. Typical application: If further reduction of input and output ripple is required, a capacitor filter network can be connected at the input and output ends. The application circuit is shown in Figure 1. However, suitable filter capacitors should be selected. If the capacitance is too large, it may cause overcurrent or poor startup of the power supply. For each output, while ensuring safe and reliable operation, the recommended capacitance load values are shown in Table 1.
2. EMC requirements: For situations with high EMC requirements, a typical EMC recommended circuit is shown in Figure 2.
3. Input requirements: Ensure that the fluctuation range of the input voltage does not exceed the upper and lower limits of the input voltage specified in this data sheet, and the input power must be greater than the output power specified in this data sheet. For situations with a 24V input voltage, it is recommended to connect a TVS tube between the positive and negative input pins for protection (recommended parameters for TVS tubes: 30V, bidirectional, SOD-123 packaging).
4. Output load requirements: Try to avoid using it without load as much as possible; When the actual power of the load is less than 10% of the rated output power in this data sheet, or when it needs to be used in no-load situations, it is recommended to connect a load resistor externally at the output end. The load resistor can be calculated according to 5-10% of the rated power in this data sheet. The calculation formula for the load resistor value is  $RL=U_{out}^2/(P_{out}*10\%)$ .
5. Overload protection: Under normal working conditions, the output circuit of this product has no protection function for overload situations. The simplest method is to connect a self recovery fuse in series at the input end, or add a circuit breaker outside the circuit; Or during design and selection, the actual power of the circuit should be around 60-80% of the rated power in this data sheet.

1. 典型应用：如果需要进一步降低输入和输出纹波，可以在输入和输出端连接电容滤波器网络。应用电路如图1所示。但是，应选择合适的滤波电容器。如果电容过大，可能会导致电源启动过流或启动不良。对于每个输出，在确保安全可靠运行的情况下，推荐的电容负载值如表1所示。
2. EMC要求：对于EMC要求较高的场合，典型的EMC推荐电路如图2所示。
3. 输入要求：确保输入电压波动范围不要超出本数据表的输入电压的上限和下限要求，输入功率必须大于本数据表中的输出功率。对于24V输入电压的场合，建议在输入正引脚和输入负引脚之间外接一个TVS管进行保护（TVS管推荐参数：30V,双向，SOD-123封装）。
4. 输出负载要求：应尽量避免空载使用；当负载的实际功率小于本数据表的额定输出功率的10%时，或需要在空载场合使用时，建议在输出端外接负载电阻，负载电阻可按照本数据表额定功率的5-10%计算，负载电阻值计算公式： $RL=U_{out}^2/(P_{out}*10\%)$ 。
5. 过载保护：在通常工作条件下，该产品输出电路对于过载情况无保护功能，最简单的方法是在输入端串接一个自恢复保险丝，或在电路中外加一个断路器；或在设计选型时，电路的实际功率在本数据表额定功率的60-80%左右。

### Product Characteristic Curve

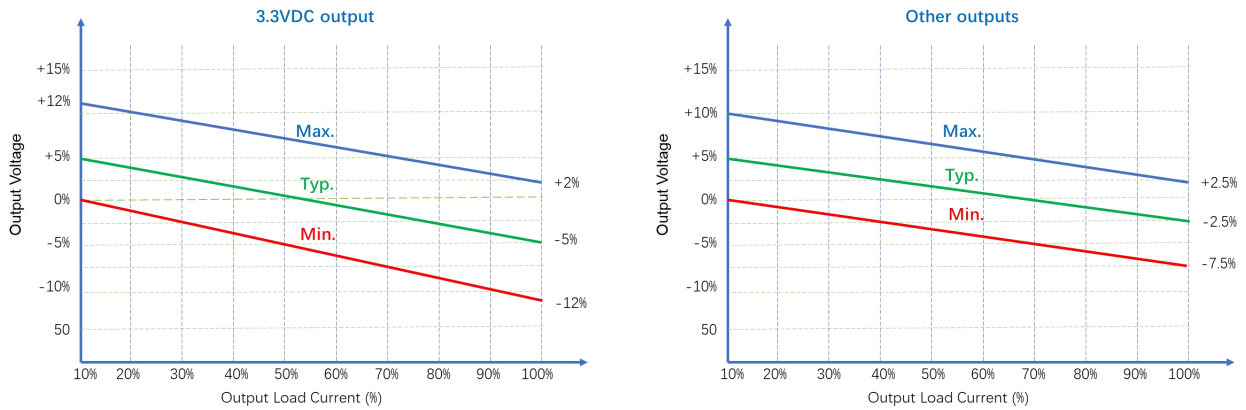


Figure 3: Voltage tolerance envelope

图3: 电压误差包络曲线图

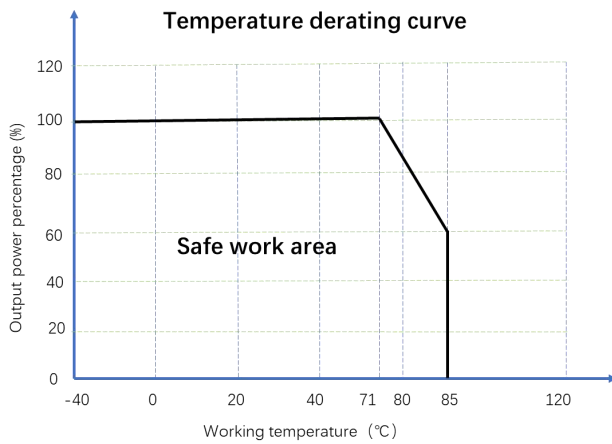


Figure 4: Temperature Derating Curve

图4: 温度减额曲线

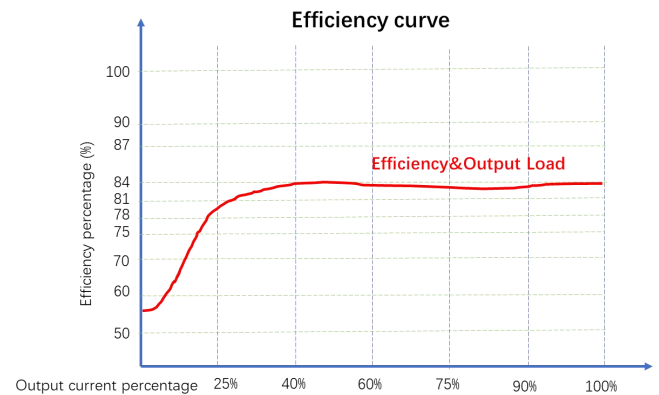


Figure 5: Efficiency VS Output Load (Nominal Voltage Input)

图5: 效率与输出负载 (标称电压输入)

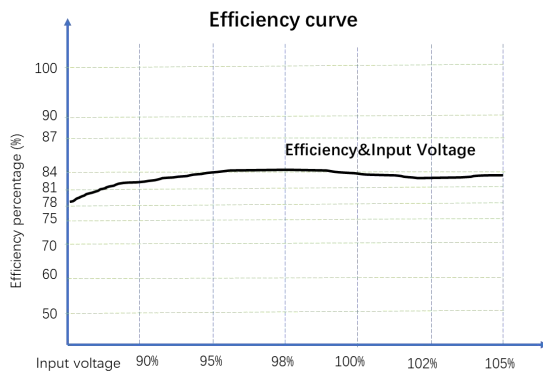


Figure 6: Efficiency VS Input Voltage (100% Load)

图6: 效率与输入电压 (100%负载)

### Overall Dimensions and Pin Functions

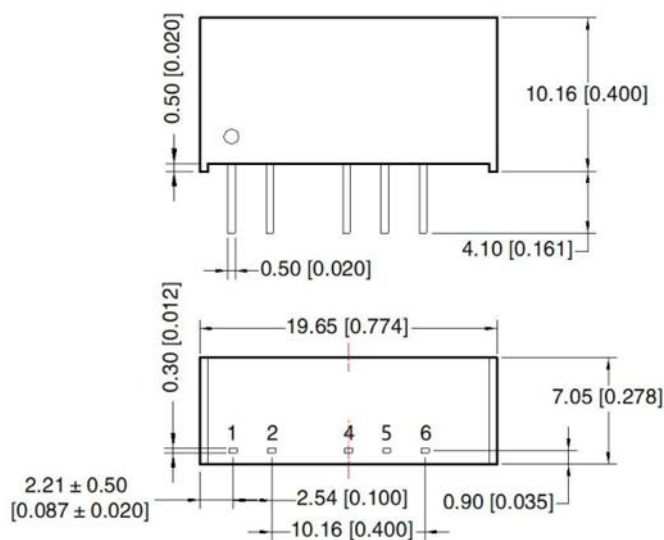


Figure 7: Overall dimensions  
图7: 外形尺寸

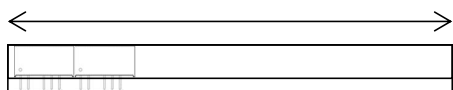
Table 3: Pin Function Table /引脚功能表

Pin	Function
1	Vin
2	GND
4	-Vo
5	0V
6	+Vo

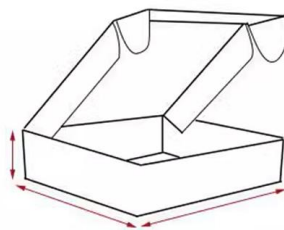
Note:  
Dimensions in mm  
Terminal diameter tolerance: +/-0.10  
Undeclared tolerance: +/-0.50

注: 尺寸单位为毫米  
端子直径公差: +/-0.10  
未注公差: +/-0.50

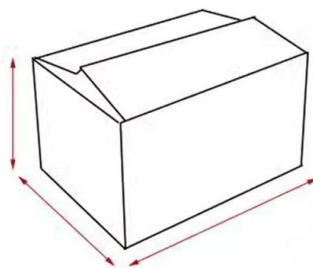
### Packaging Method



18 Pieces/Tube  
18PCS/管



900 Pieces/Inner box  
900 PCS/内盒



4500 Pieces/Outer box  
4500 PCS/外箱

### Notes & Instructions

1. The input voltage shall not exceed the specified range value, otherwise permanent and unrecoverable damage may be caused;
2. Unless otherwise specified, the parameters in this manual are measured at 25 °C, 40%~75% humidity, input nominal voltage and output pure resistance mode under full load;
3. All index test methods are based on the company's enterprise standards.
4. The copyright and the final interpretation right of the product belong to AMCHARD.

**DONGGUAN AMCHARD-POWER TECHNOLOGY CO., LTD.**

www.amchard-power.com

Mail:info@amchard-power.com